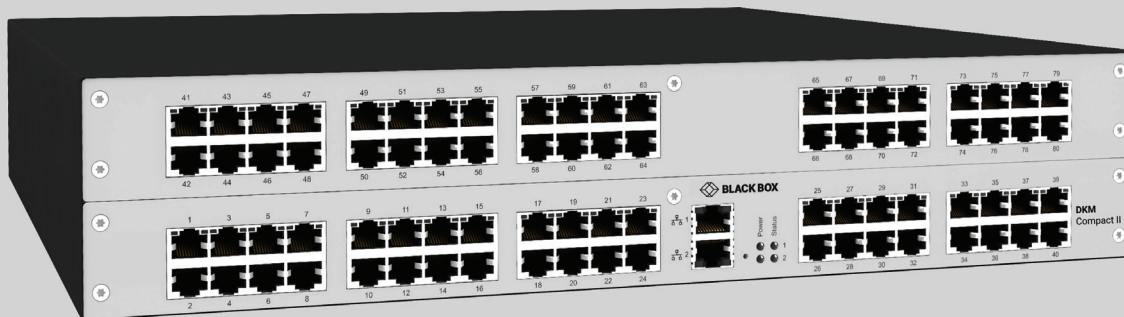


DATA SHEET

ACXC SERIES

DKM COMPACT II SWITCHES

TECHNICAL SUPPORT AT 877.877.2269 OR VISIT BLACKBOX.COM



OVERVIEW

DKM FX COMPACT II KVM MATRIX SWITCHES DATA SHEET

INTRODUCTION

The DKM Compact II KVM Matrix Switches come in sizes of 1, 2, and 4 RU. With their capability to facilitate 1G and 3G technology within a single frame, they support modern applications with a mix of HD and 4K video resolutions in a very economical way. Their custom-design chassis allows for future field upgradability, so you can scale your system from 40 ports to 80 ports or even up to 160 ports to meet your business needs.

CATx DKM Switches enable you to extend KVM signals up to 140 meters (459 feet) over standard CATx cable. If you're using CATx 3G, you can extend signals up to 100 meters (328 feet).

Fiber DKM Switches enable you to extend KVM signals up to 400 meters (1312 feet) over standard multimode fiber or even 10 kilometers (6.2 miles) over single mode fiber.

Hybrid DKM Switches enable you to extend KVM signals up to 10 kilometers (6.2 miles) over singlemode fiber or 400 meters (1312 feet) over multimode fiber. They also allow you to extend KVM signals up to 140 meters (459 feet) over standard CATx cable. If you're using CATx 3G, you can extend signals up to 100 meters (328 feet).

If one of these standard switches don't meet your requirements, we can create custom versions specific to your application.

Choose from 5 Types of I/O Modules

DKM I/O Modules allow you to add CATx or fiber inputs/outputs to a slot in your DKM Compact II KVM Matrix Switch. Choose from a variety of different modules providing eight CATx or fiber ports. Select 1G or 3G network speed models depending on the types of signals and video resolutions that need to be transmitted.

Build a Large Matrix Grid

With the 10G Grid Switch, you can link multiple DKM Compact II KVM Switches together to create a bigger system. This functionality allows you to build a homogeneous large matrix grid for your enterprise.

Grid switches can cascade with other switches with a grid card (compact or modular). Grid switches/grid cards can support (8) single head connections per port since they support a 10G link. Use a grid switch when you have run out of ports and need more, or if you have computers/users in another area of the building.

Customize Your System with a Front Plate

The DKM Front Plates allow for chassis customization by increasing their port count using additional I/O cards, and then fitting the right front plate to secure the chassis and cards, leaving no open gaps for foreign objects to enter the chassis, keeping it safe.

Complete Your Installation with DKM Extenders

The DKM Switches work in combination with preconfigured or modular DKM Extenders. The extender transmitter and receiver units connect to the switch and the switch sends routing signals to the extenders and manages the DKM system. Extenders are required components for the DKM system to work as designed.

Easy to Set Up

By simply connecting the extender to the chassis, the internal application control software will recognize and auto-configure the port as a Receiver or Transmitter device. This Flex-Port technology provides huge time savings for system installers who normally have to pre-configure ports to specific I/O requirements. The system also supports instant switching technology. With incredible speed, switching between sources is glitch-free and instantaneous, reducing eye strain and annoying video tearing found with other systems.

Where centralized switching of KVM is necessary, the DKM Compact II is the perfect KVM solution. It is especially suited for factory floor automation control systems, production studios, OB Vans as well as command and control environments.

Works with Your Existing DKM System

The DKM Compact II KVM Matrix Switches are compatible with all Black Box DKM extenders. Update the firmware, then simply match the correct endpoint hardware (1G, 3G, Fiber) to the respective I/O card to get connectivity.

For more information about compatible DKM KVM Modular Extenders that work with the DKM Compact II Switches, see the Extenders data sheet at https://www.blackbox.com/DKM-Modular-Extenders_datasheet

FEATURES

- **Choose CATx, fiber, or mixed configurations for 1G or 3G**
- **Compatible with upcoming 1G/3G, IPv6**
- **Modular design is easy to scale and maintain**
- **Compatible with all Black Box DKM KVM extenders**
- **Has redundant power supply unit and network interface connections**
- **Versatility: With only 3 types of chassis and only 5 types of I/O modules, an almost endless number of customer-specific Black Box matrix switches are possible**

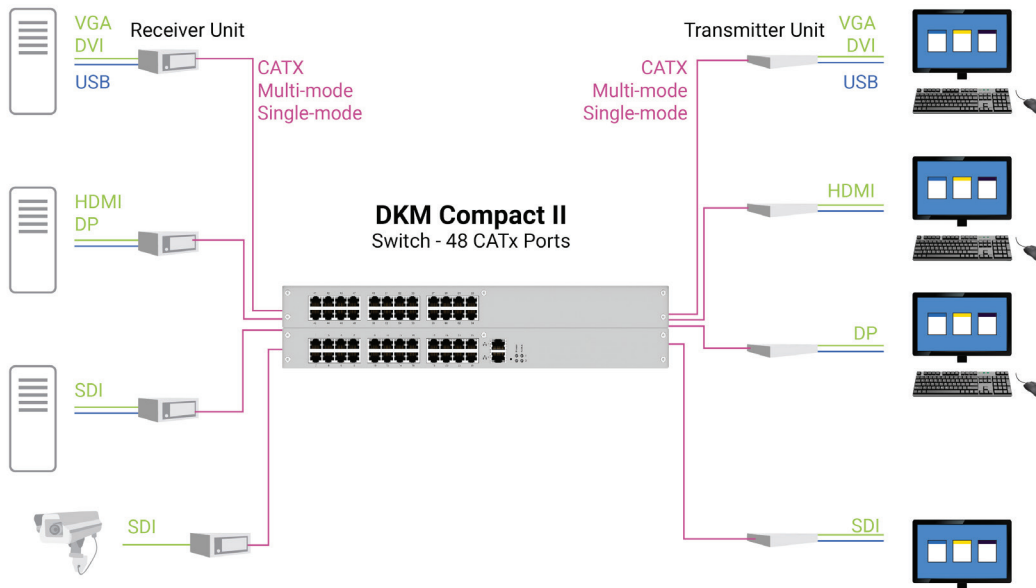


SPECIFICATIONS

DKM FX COMPACT II KVM MATRIX SWITCHES DATA SHEET

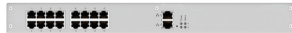
GENERAL SPECIFICATIONS						
SPECIFICATION	DESCRIPTION					
INPUT/OUTPUT	(16)-to (160) CATx or fiber (any combination) (2) RJ-45 Gigabit Ethernet					
SUPPORTED SIGNALS	DisplayPort, HDMI, DVI-D, DVI-I, USB 2.0, USB-HID, RS-232, RS-422, analog/digital or balanced audio, SDI via DKM extenders					
CONTROL	OSD (On-Screen Display), DKM FX Utility Tool (Java), API					
	CATx	CATx 3G	Singlemode fiber, 9- μ m	Singlemode fiber 3G, 9- μ m	Multimode fiber, 50- μ m, OM3	Multimode fiber, 50- μ m
MAXIMUM CABLE DISTANCE	140 m (459 ft.)	100 m (328 ft.)	10 km (6.2 mi.)	5 km (3.1 mi.)	400 m (1312 ft.)	400 m (1312 ft.)
	1 RU		2 RU		4 RU	
POWER	100-240 V, 3 A, 50/60 Hz		100-240 V, 4 A, 50/60 Hz		100-240 V, 5.8 A, 50/60 Hz	
DIMENSIONS	1.75" H x 17.4" W x 17.7" D (4.4 x 44.2 x 44.9 cm)		3.5" H x 17.4" W x 17.7" D (9.0 x 44.2 x 44.9 cm)		7.0" H x 17.4" W x 17.7" D (17.7 x 44.2 x 44.9 cm)	
WEIGHT	approx. 17.0 lb. (7.7 kg)		approx. 24.3 lb. (11 kg)		approx. 41.9 lb. (19 kg)	
SUITABLE EXTENDERS	Compatible with all Black Box DKM extenders					

APPLICATION DIAGRAM



CATX 1G AND CATX 3G: 16 TO 160 PORTS

DKM FX COMPACT II KVM MATRIX SWITCHES DATA SHEET



16-Port



24-Port



32-Port



40-Port



48-Port



64-Port



80-Port



120-Port



128-Port



144-Port



160-Port

ITEM	CODE
DKM Compact II KVM Matrix Switches	
CATx, 1G	
16-Port	ACXC16-1G
24-Port	ACXC24-1G
32-Port	ACXC32-1G
40-Port	ACXC40-1G
48-Port	ACXC48-1G
64-Port	ACXC64-1G
80-Port	ACXC80-1G
120-Port	ACXC120-1G
128-Port	ACXC128-1G
144-Port	ACXC144-1G
160-Port	ACXC160-1G

ITEM	CODE
DKM Compact II KVM Matrix Switches	
CATx, 3G	
16-Port	ACXC16-3G
24-Port	ACXC24-3G
32-Port	ACXC32-3G
40-Port	ACXC40-3G
48-Port	ACXC48-3G
64-Port	ACXC64-3G
80-Port	ACXC80-3G
120-Port	ACXC120-3G
128-Port	ACXC128-3G
144-Port	ACXC144-3G
160-Port	ACXC160-3G



FIBER 1G AND FIBER 3G: 16 TO 160 PORTS

DKM FX COMPACT II KVM MATRIX SWITCHES DATA SHEET



16-Port



24-Port



32-Port



40-Port



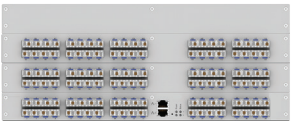
48-Port



64-Port



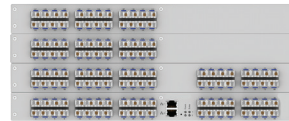
80-Port



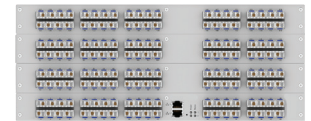
120-Port



128-Port



144-Port



160-Port

ITEM	CODE
DKM Compact II KVM Matrix Switches	
Fiber, 1G	
16-Port	ACXC16F-1G
24-Port	ACXC24F-1G
32-Port	ACXC32F-1G
40-Port	ACXC40F-1G
48-Port	ACXC48F-1G
64-Port	ACXC64F-1G
80-Port	ACXC80F-1G
120-Port	ACXC120F-1G
128-Port	ACXC128F-1G
144-Port	ACXC144F-1G
160-Port	ACXC160F-1G

ITEM	CODE
DKM Compact II KVM Matrix Switches	
Fiber, 3G	
16-Port	ACXC16F-3G
24-Port	ACXC24F-3G
32-Port	ACXC32F-3G
40-Port	ACXC40F-3G
48-Port	ACXC48F-3G
64-Port	ACXC64F-3G
80-Port	ACXC80F-3G
120-Port	ACXC120F-3G
128-Port	ACXC128F-3G
144-Port	ACXC144F-3G
160-Port	ACXC160F-3G

CATX/FIBER (HYBRID): 40 TO 160 PORTS

DKM FX COMPACT II KVM MATRIX SWITCHES DATA SHEET



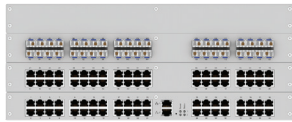
40-Port



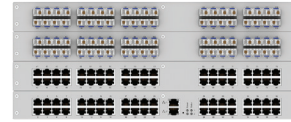
64-Port



64-Port



120-Port



160-Port

ITEM	CODE
DKM Compact II KVM Matrix Switches	
Hybrid 1G (CATx and Fiber)	
40-Port (24 CATx, 16 Fiber)	ACXC24F16-1G
64-Port (24 CATx, 40 Fiber)	ACXC24F40-1G
64-Port (40 CATx, 24 Fiber)	ACXC40F24-1G
80-Port (40 CATx, 40 Fiber)	ACXC40F40-1G
120-Port (80 CATx, 40 Fiber)	ACXC80F40-1G
160-Port (80 CATx, 80 Fiber)	ACXC80F80-1G
160-Port (120 CATx, 40 Fiber)	ACXC120F40-1G

ITEM	CODE
DKM Compact II KVM Matrix Switches	
Hybrid 3G (CATx and Fiber)	
40-Port (24 CATx, 16 Fiber)	ACXC24F16-3G
64-Port (24 CATx, 40 Fiber)	ACXC24F40-3G
64-Port (40 CATx, 24 Fiber)	ACXC40F24-3G
80-Port (40 CATx, 40 Fiber)	ACXC40F40-3G
120-Port (80 CATx, 40 Fiber)	ACXC80F40-3G
160-Port (80 CATx, 80 Fiber)	ACXC80F80-3G
160-Port (120 CATx, 40 Fiber)	ACXC120F40-3G

GRID: 32 PORTS



32-Port



32-Port

ITEM	CODE
DKM Compact II KVM Matrix Switches	
Grid, 1G	
32-Port CATx	ACXC32-1G-GRID
32-Port Fiber	ACXC32F-1G-GRID

CUSTOM DESIGN: 16 TO 160 PORTS

DKM FX COMPACT II KVM MATRIX SWITCHES DATA SHEET

- Start with a 40-Port Matrix with the scalability of up to 80 ports non-blocking (2 RU)
- Start with a 40-Port Matrix with the scalability of up to 160 ports non-blocking (4 RU)
- Mix and match CATx and Fiber in a variety of options
- Mix and match 1G and 3G (4K60) interface in a variety of options
- Offers DKM FX enterprise flexibility and scalability at Compact DKM FX size and price
- All versions with integrated Dual PSU and Dual NIC



Custom Design: Up to 80 Ports



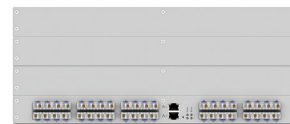
Custom Design: Up to 80 Ports



Custom Design: Up to 80 Ports



Custom Design: Up to 160 Ports



Custom Design: Up to 160 Ports



Custom Design: Up to 160 Ports



Custom Design: Up to 80 Ports



Custom Design: Up to 80 Ports



Custom Design: Up to 160 Ports



Custom Design: Up to 160 Ports

ITEM	CODE
DKM Compact II KVM Matrix Switches	
2 RU, Up to 80 Ports, Custom Design	
40-Port CATx 1G	ACXC40-1G-2RU
40-Port Fiber 1G	ACXC40F-1G-2RU
40-Port Hybrid 1G	ACXC24F16-1G-2RU
32-Port + Grid, CATx 1G	ACXC32-1G-GRID-2RU
32-Port + Grid, Fiber	ACXC32F-1G-GRID-2RU

ITEM	CODE
DKM Compact II KVM Matrix Switches	
4 RU, Up to 160 Ports, Custom Design	
40-Port CATx 1G	ACXC40-1G-4RU
40-Port Fiber 1G	ACXC40F-1G-4RU
40-Port Hybrid 1G	ACXC24F16-1G-4RU
32-Port + Grid, CATx 1G	ACXC32-1G-GRID-4RU
32-Port + Grid, Fiber	ACXC32F-1G-GRID-4RU

CUSTOM DESIGN: I/O MODULES

DKM FX COMPACT II KVM MATRIX SWITCHES DATA SHEET

ITEM	CODE
DKM Compact II KVM Matrix Switches	
I/O Modules for Custom Design	
CATx, 1G	ACXC8-M-1G
CATx, 3G	ACXC8-M-3G
Fiber, 1G	ACXC8F-M-1G
Fiber, 3G	ACXC8F-M-3G
LWL, 10G	ACXC-GRID

CUSTOM DESIGN: 2 RU, 3 RU, 4 RU FRONT PLATES

ITEM	CODE
DKM Compact II KVM Matrix Switches	
Front Plates, 2 RU	
24x CATx 1G/3G, Ports 41-64	ACXC-FP-C24S2
40x CATx 1G/3G, Ports 41-80	ACXC-FP-C40S2
24x fiber 1G/3G, Ports 41-64	ACXC-FP-F24S2
40x fiber 1G/3G, Ports 41-80	ACXC-FP-F40S2
32x CATx 1G/3G + Grid, Ports 41-80	ACXC-FP-C32GS2
32x fiber 1G/3G + Grid, Ports 41-80	ACXC-FP-F32GS2

ITEM	CODE
DKM Compact II KVM Matrix Switches	
Front Plates, 3 RU	
24x CATx 1G/3G, Ports 81-104	ACXC-FP-C24S3
40x CATx 1G/3G, Ports 81-120	ACXC-FP-C40S3
24x fiber 1G/3G, Ports 81-104	ACXC-FP-F24S3
40x fiber 1G/3G, Ports 81-120	ACXC-FP-F40S3
32x CATx 1G/3G + Grid, Ports 81-80	ACXC-FP-C32GS3
32x fiber 1G/3G + Grid, Ports 81-120	ACXC-FP-F32GS3

ITEM	CODE
DKM Compact II KVM Matrix Switches	
Front Plates, 4 RU	
24x CATx 1G/3G, Ports 121-144	ACXC-FP-C24S4
40x CATx 1G/3G, Ports 121-160	ACXC-FP-C40S4
24x fiber 1G/3G, Ports 121-144	ACXC-FP-F24S4
40x fiber 1G/3G, Ports 121-160	ACXC-FP-F40S4
32x CATx 1G/3G + Grid, Ports 121-160	ACXC-FP-C32GS4
32x fiber 1G/3G + Grid, Ports 121-160	ACXC-FP-F32GS4



DISCLAIMER/TRADEMARKS

DISCLAIMER

Black Box Corporation shall not be liable for damages of any kind, including, but not limited to, punitive, consequential or cost of cover damages, resulting from any errors in the product information or specifications set forth in this document and Black Box Corporation may revise this document at any time without notice.

TRADEMARKS

Black Box and the Black Box logo type and mark are registered trademarks of Black Box Corporation.

Any other trademarks mentioned in this document are acknowledged to be the property of the trademark owners.

ABOUT BLACK BOX

Black Box is a world leading technology solutions provider specializing in complete high-performance KVM, professional A/V signal distribution and extension and switching solutions for mission-critical applications. Black Box is dedicated to delivering superior project engineering, technical support, and 24/7 customer service you can rely on for your most critical operations.

Every day, our customers trust us to design, integrate, and maintain reliable control room solutions for broadcasting, post-production, stadiums & arenas, medical, air traffic control, oil & gas, government & military, and utility industries. Leave the tech to us and our comprehensive technology solutions will deliver secure connections, fast-response times, real-time collaboration and more.

