

BOXILLA™

KVM MANAGER

INFINITE POSSIBILITIES IN AV & KVM SYSTEMS MANAGEMENT





BOXILLA & INVISAPC OFFER ENTERPRISE-LEVEL CONTROL ROOM SOLUTIONS FOR



BROADCAST



PUBLIC SAFETY



DEFENSE



TRANSPORTATION



ENERGY



MANUFACTURING



Over the past several decades, KVM technology helped us move servers—along with their noise, heat, and space consumption—out of the control room. KVM technology also allowed for many users to access multiple physical servers, sharing resources in a “virtual access” manner.

THE EVOLUTION

The power Boxilla unleashes in the Emerald and DKM platforms is only the tip of the iceberg. Because it’s a software-based solution, it’s also a future-proof solution. Future upgrades to Boxilla will enable support for other Black Box product families, including other KVM categories such as KVM Matrix Switches, Desktop KVM Switches, Control Systems and even Collaboration Systems. This will expand the power of system management even further, not only for control rooms, but for other AV and IT network environments as well.

Black Box offers flexible endpoint licensing options that enable you to manage anywhere from 25 to thousands of devices through Boxilla, helping you build an efficient AV/IT management system.

MOVING TO THE CLOUD WITH EMERALD KVM

The next advancement in control room technology has taken the form of access to cloud-based virtual servers. The Emerald KVM platform bridges the gap between IP-based KVM extension/switching and access to virtual servers. Emerald offers plug-and-play connectivity with a receiver installed at each users’ workstation to support access to physical and/or virtual servers.

The ability to leverage the cloud as a content storage and distribution system for control rooms and other environments is significant, because it brings flexibility and scalability to your operation, and reduces capital expenditures.

But in an enterprise environment, you need something more— something that frees you from limitations, ensures high performance, and eliminates the pain of managing thousands of devices in a large-scale system.

THE SKY’S THE LIMIT

Boxilla, the premier KVM system management platform, scales the Emerald KVM matrix to an unlimited number of devices.

More importantly, Boxilla provides a centralised, easy-to-use command centre that gives you full monitoring and control of not just devices, but your entire system, all across the enterprise. Without leaving your seat, you can control user access, monitor device status and address potential problems before they happen.

By ensuring security with authentication and access control, Boxilla can also set your mind at ease. It reports back to you through a security interface dashboard, and provides real-time alerts if someone is trying to bypass security profiles.



ADVANTAGES FOR YOUR NETWORK

- Easy-to-use centralised admin and control with simple configuration for large-scale deployments
- Enterprise management with enhanced authentication, access control and accounting for secure communications
- Support for virtual desktops and physical PC/servers, plus integration with virtualisation management tools
- Advanced mode controls, including private, shared, pre-emption and auto log-in



EXPLORE NEW HEIGHTS

IN SOLVING—AND AVOIDING—NETWORK PERFORMANCE PROBLEMS

With Boxilla, your command centre dashboard gives you an instant snapshot of your network, including what users and devices are active and how much bandwidth different devices are using, so you can see how your system is performing right now at any given moment. Drill-down menus let you dig deeper for more in-depth analysis.

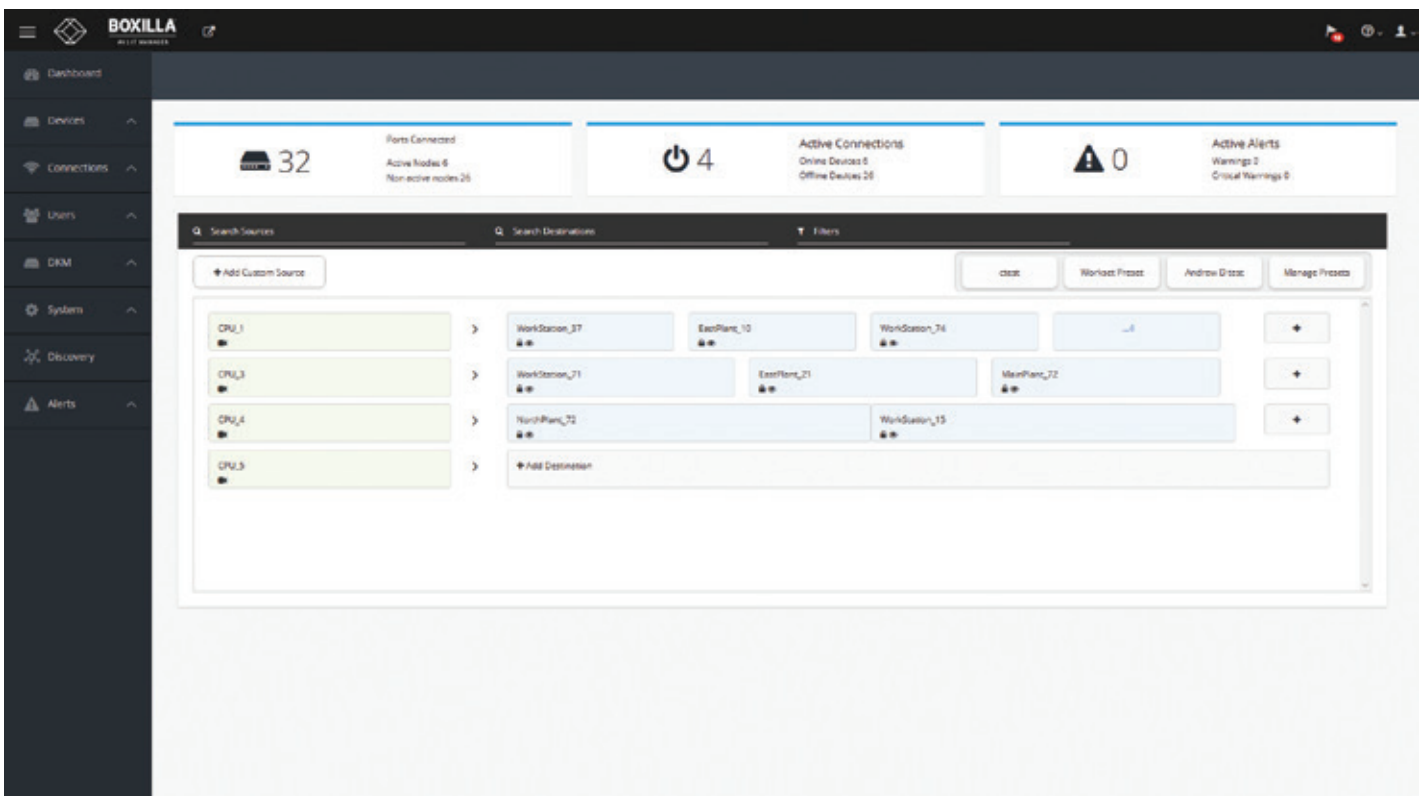
Using Boxilla is simple. It automatically discovers all devices on your network and builds a database that allows you to configure usernames, passwords and access rights. You can also set bandwidth usage limitations and have Boxilla alert you if they're exceeded.

BOXILLA DASHBOARD DRILL-DOWN

Charting on key performance parameters:

- Bandwidth
- Frame rate
- User changes
- Power

If a user is complaining of poor video quality, for example, you can use the information Boxilla provides to see that the problem is caused by an overloaded network switch. Better yet, you can use the information Boxilla provides about bandwidth usage and device status to identify and address potential problems before they result in user complaints.





BOXILLA MULTI-STAGE DEPLOYMENT

WILL PROVIDE COMPATIBILITY WITH THESE BLACK BOX PRODUCTS:

- EMERALD KVM PLATFORM
- DKM

Boxilla is designed to work with Emerald and KVM platforms. You'll be able to upgrade Boxilla as future releases provide compatibility with other Black Box products that support control room, conference room and other KVM applications.



EXPANDING THE POWER

OF BOXILLA

By itself, Emerald is an IP-based LAN/WAN solution that enables point-to-point KVM extension and transition to small, unmanaged, cloud-based KVM matrix switching configurations. Consisting of transmitters and receivers, it offers plug-and-play connectivity right out of the box.

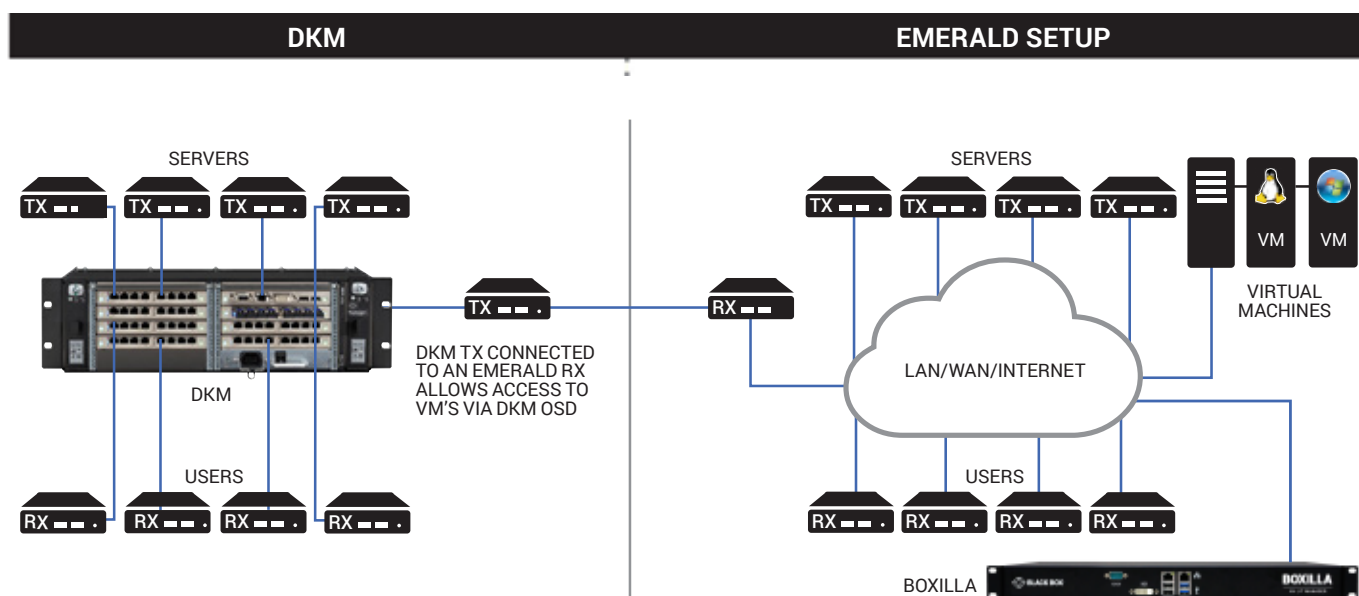
A big advantage of the Emerald KVM platform zero-client solution is its support for both physical and virtual servers, providing an easy migration path for organisations to move toward virtualisation.

Combine Boxilla with Emerald to achieve an enterprise-class system that's easy to use, simplifies management of large-scale installations, enhances system security and offers high-performance system management.

MOVING TO THE CLOUD WITH DKM

If you already have a DKM system and want instant access to both physical and virtual servers, consider adding Boxilla and Emerald. When these systems work together, your DKM can reach any server instead of being restricted to a private network. DKM speaks directly to Boxilla and Emerald when all three are connected on the same network, allowing you to expand and connect to DKM systems both virtually and across the internet. Now you can instantly reach any server on your network, enabling you to make your operations more productive.

Using these systems together will also enhance your security. Because Java isn't preferred in many secure environments, you can manage DKM through Boxilla to safeguard your network.



WHY BLACK BOX?

EXPERTISE

Black Box project engineers can assist with system assessment, design, deployment and training.

BREADTH

Black Box offers the most comprehensive suite of engineered KVM solutions in the industry.

SUPPORT

Reflecting our commitment to complete satisfaction, our dedicated team of highly trained support technicians is available by phone free of charge, every day of the year.

WARRANTIES

Multi-year warranties with multi-year extensions and replacement options are available.

FINANCIAL STRENGTH

Over \$1 billion in annual revenue; publicly traded (BBOX).

EXPERIENCE

Providing leading technology solutions since 1976, Black Box helps more than 175,000 customers in 150 countries build, manage, optimise and secure IT infrastructures.

CENTER OF EXCELLENCE

Black Box offers a Center of Excellence featuring professional services and support agreements that help optimise customers' systems and maximise uptime.

SERVICE LEVEL AGREEMENTS

Our Service Level Agreements give customers access to technical support, product training, dedicated application engineers and more.



