

Agility configuration via web pages

Each Agility module hosts its own internal set of web pages which contain all configuration details and settings. You will need to use a computer connected to the same network as each Agility unit to access the web pages. Additionally, on the console attached to the receiver unit, you can access its configuration details via the On Screen Display (OSD) by pressing:

CTRL + ALT + C

To configure Agility modules via their web pages

Run a web browser on your computer and enter the IP address of the required Agility:

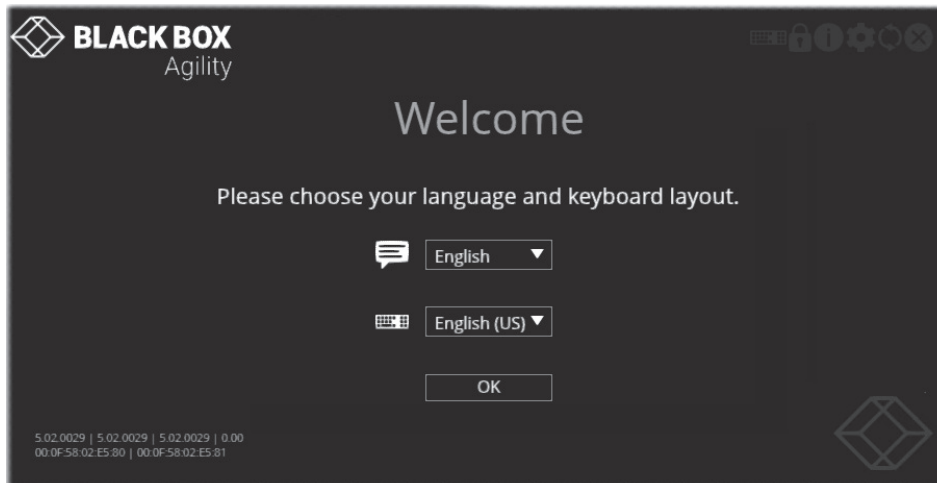
The default addresses (if using port 1) are: **Transmitter:** https://169.254.1.33

Receiver: https://169.254.1.32

The default addresses (if using port 2) are: **Transmitter:** https://169.254.1.43

Receiver: https://169.254.1.42

The opening page should be displayed:



Full user details and setup instructions can be found at:
www.blackbox.com

Welcome

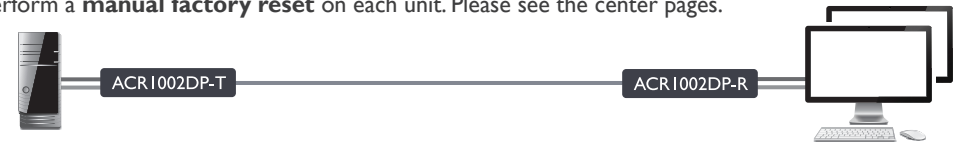
This quick start guide covers some of the key points of the Black Box ACR1002DP and ACR1002FDP modules. Full user details and setup instructions can be found at **www.blackbox.com**. Please read the supplied safety instruction leaflet before use.

Initial configuration

Agility modules can be linked in two main ways: Direct or Networked.

Direct linking

Where Agility transmitters and receivers are directly linked to each other, very little configuration action is required, provided that they both have their factory default settings in place - just link them together. If the standard settings have been changed in a previous installation, you merely need to perform a **manual factory reset** on each unit. Please see the center pages.

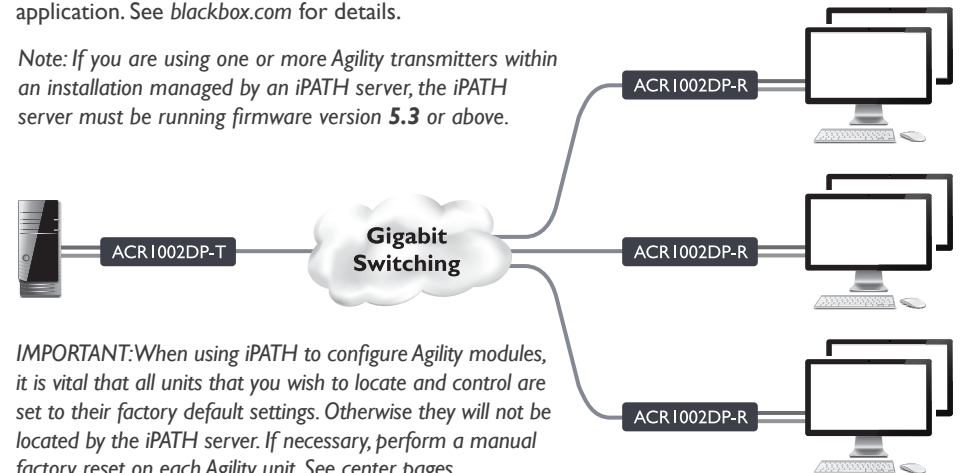


Networked linking

Where Agility modules are connected via networked links, you can either configure them individually, or configure them collectively using an iPATH server:

- **Configuring networked Agility modules individually** - You need to specify the network addresses of the Agility modules so that they can locate each other. This can be done using via OSD on the console connected to the RX unit by pressing **CTRL + ALT + C**. See rear page.
- **Configuring networked Agility modules collectively** - The iPATH server allows you to configure, control and coordinate any number of Agility transmitters and receivers from a single application. See blackbox.com for details.

Note: If you are using one or more Agility transmitters within an installation managed by an iPATH server, the iPATH server must be running firmware version 5.3 or above.

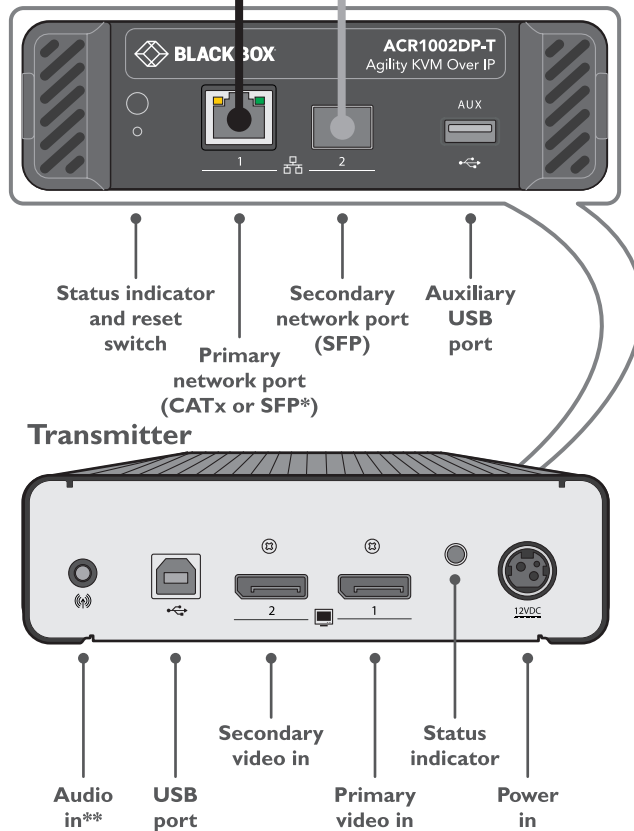


IMPORTANT: When using iPATH to configure Agility modules, it is vital that all units that you wish to locate and control are set to their factory default settings. Otherwise they will not be located by the iPATH server. If necessary, perform a **manual factory reset** on each Agility unit. See center pages.

Connections

Secondary link (using IGbE CATx or fiber SFP modules) - direct link or via suitable switch

Primary link (using IGbE CATx or fiber SFP modules*) - direct link or via suitable switch



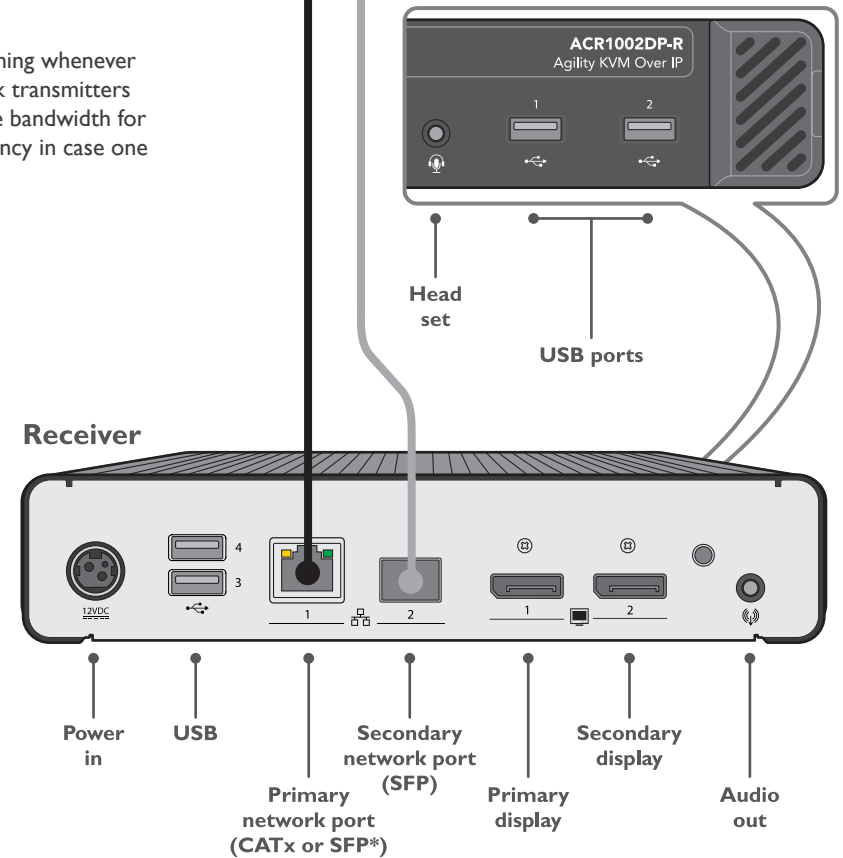
Teaming

Agility modules are ready to automatically invoke teaming whenever the primary and secondary ports are both used to link transmitters and receivers. Teaming potentially doubles the available bandwidth for video intensive applications and also provides redundancy in case one link is lost.

* ACR1002FDP variants have 2x SFP sockets and no in-built CATx ports

** Audio is supported in the initial product release solely via the USB link with the host computer. In subsequent firmware updates further audio capabilities will be added.

Conversion between the USB derived digital audio and the receiver compatible audio format audio is carried out at the transmitter.



Main status indicators

Green	All services present.
Amber	Running but video, USB or network link missing.
Red	Booting before processor loaded or failed.
Red rapid flash	Critical error has been detected (a message will also be displayed within the OSD.)
Blue	Factory reset mode active.
Red/green flash	Booting into factory recovery mode.
Green/blue flash	Upgrade mode active.
Fast green flash	Identify mode active.

To perform a manual factory reset

A factory reset returns Agility module to its default configuration.

- 1 Power on the Agility module.
- 2 Use a long narrow implement (e.g., a straightened-out paper clip) to press-and-hold the recessed reset button on the front panel for roughly ten seconds, until the status indicator turns **blue** (Note: alternating red/green indications will occur during the ten second period while the button is still pressed).
- 3 Release the reset switch. The indicator will change to **red** for a short time (less than ten seconds) and then back to **blue** while the Agility module performs the reset and should then change to an alternative color, usually **orange** initially, signifying that the operation is complete.

Note: If you are performing a factory reset and intend to disconnect the power immediately after the reset, you must wait at least 30 seconds after you have released the reset button for it to complete the process.

